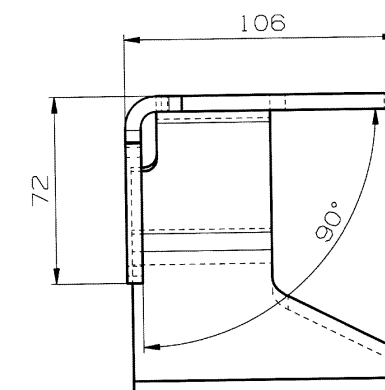
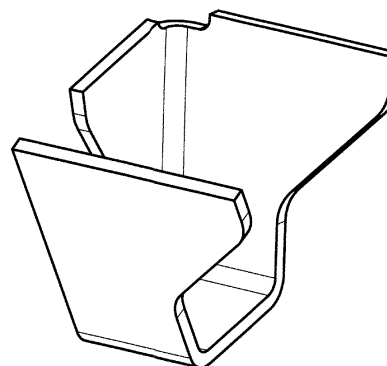
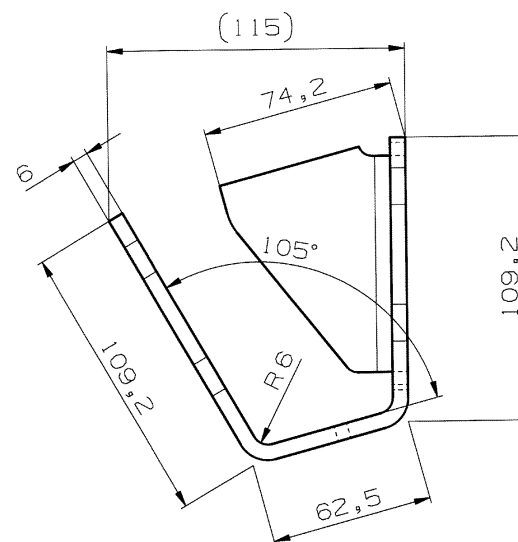
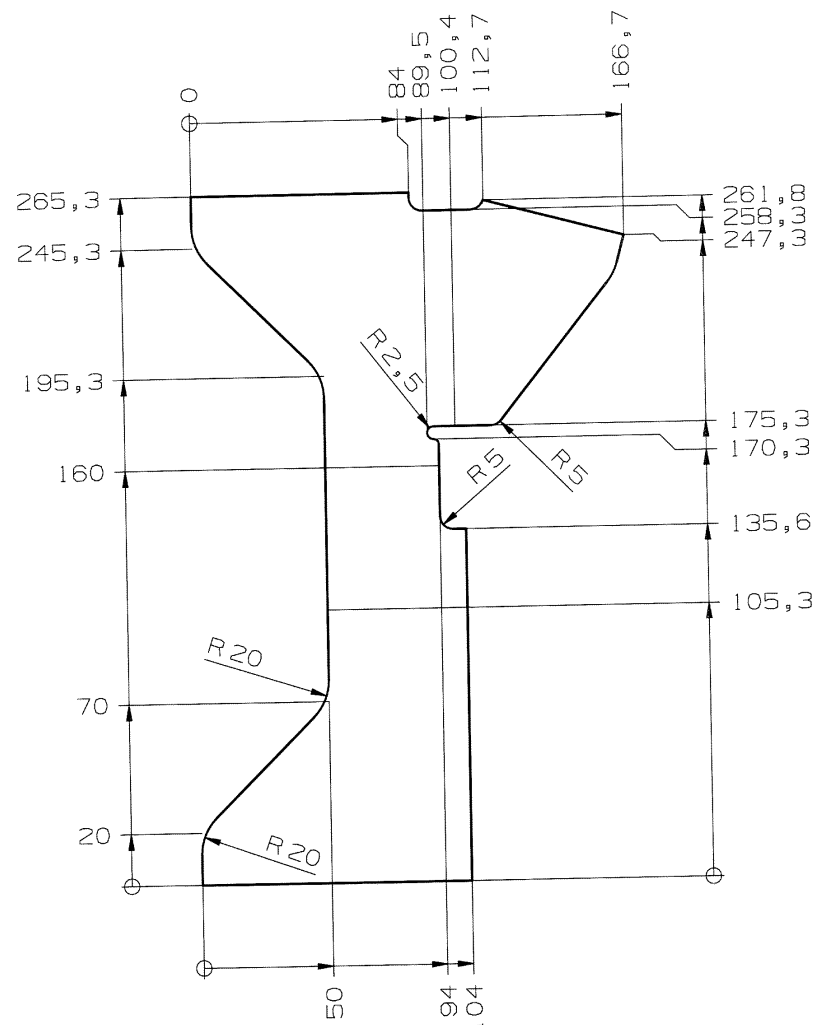


PŘEKLAD

dne 13. 09. 2013

PROVEDL/A

P. Nováková



Screw threads tolerances ISO 965 - 2 6g/6h	
General tolerances for laser cutting DIN 2310 - 5 -IL up to 3mm / -IK over 3mm	
General tolerances for nibbling / bending DIN 6930 - 2 - m	

Projection see: ISO 128				Surface Quality		TEIL ÜBERARBEITET PART REWORKED		KRAU.SCHMIGE		14.05.2013		K1669	
Scale		Original-Size		Standard Color				Name		Date		OCM-Nr.	
1:2		A3		Name		Date		Count		Change			
Bend Tolerance see		DIN 6930 - 2 - m		KRAU.SCHMIGE		08.01.2013		Material: BS10		Theor. Weight (kg):		1.03	
Welding Tolerance see		DIN EN ISO 13920-BF		Name		Versteifung							
General Tolerance see		DIN ISO 2768 - mK		Additional Text									
Surface Condition see		DIN ISO 1302		Mat-Nr.				Doc-Nr		2000123731		Version 01	
Laser-Cut Tolerance see		DIN 2310-5-IL up to 3mm / -IK over 3mm											
Copyright reserved to ISO 16016													

9-10-2013  
ARCHIV

1

Nr 73/00460

APPROVED FOR Anfragefrei (F1)

Welding Construction according to "Werknorm 43"  
Surface Quality according to "Werknorm 40"  
Theor. Weight according to "KR001-2003"  
Material according to "Werknorm 51"